

MONTHLY MEMBERSHIP PROGRESS REPORT

District 120

Results as of: 6/30/2024

GMT:

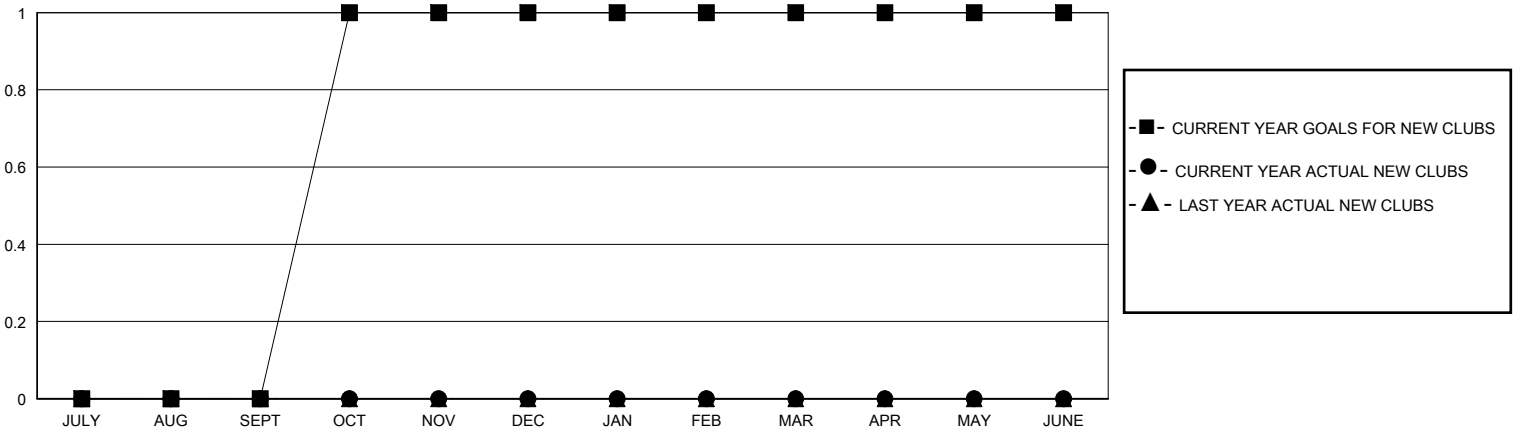
LOCATION ESTONIA

GMT CA

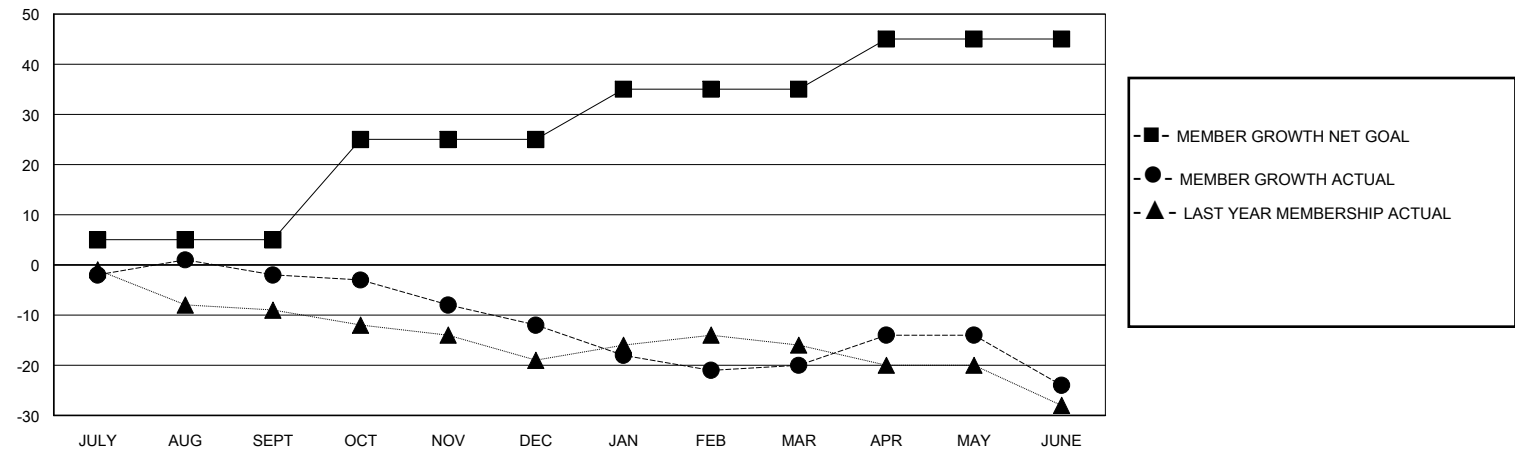
Clubs			
RESULTS FOR 2023-2024			
QUARTER	NEW CLUB GOAL	NEW CLUBS	DROPPED CLUBS
JULY/AUG/SEPT	0	0	0
OCT/NOV/DEC	1	0	0
JAN/FEB/MAR	0	0	0
APR/MAY/JUNE	0	0	0

Members			
RESULTS FOR 2023-2024			
QUARTER	MEMBER GROWTH NET GOAL	MEMBER GROWTH ACTUAL	DROPPED MEMBERS ACTUAL (including transfers)
JULY/AUG/SEPT	5	9	11
OCT/NOV/DEC	20	5	15
JAN/FEB/MAR	10	13	21
APR/MAY/JUNE	10	20	24

GOALS AND ACTUAL NEW CLUBS CUMULATIVE



GOALS AND ACTUAL MEMBERS CUMULATIVE



DROPPED CLUBS: 0	24 CLUBS OF 60 ADDED 1 OR MORE NEW MEMBERS	GENDER DISTRIBUTION MALE 716 (65.27%) FEMALE 381 (34.73%)
DROPPED MEMBERS DECEASED 4 CLUB CANCELLED 0 OTHER 67 <hr/> TOTAL 71	CLICK HERE FOR CUMULATIVE MEMBERSHIP DATA	TOTAL FAMILY UNIT MEMBERS 80 FAMILY MEMBERS PAYING HALF DUES 41